

## Radial Damper / Exhaust Fan



### CO-Radial Damper

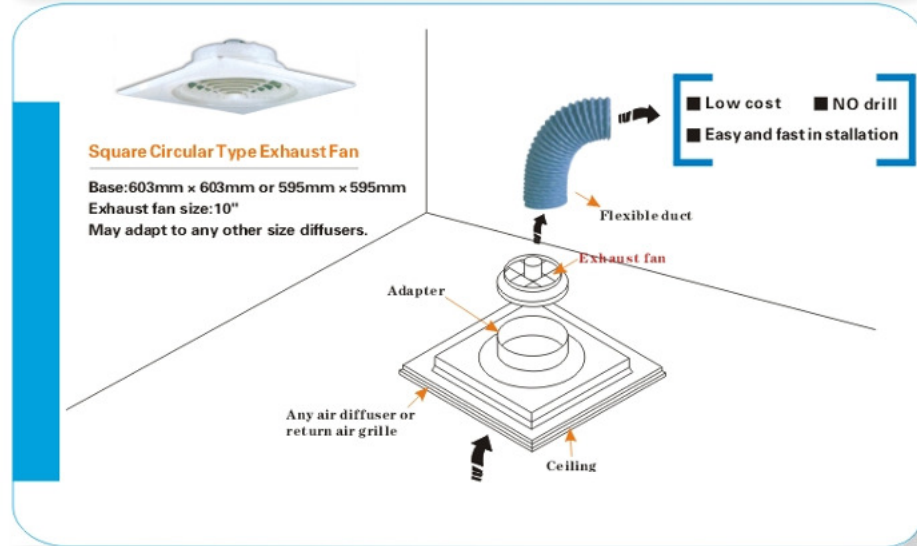
Material: Galvanized steel  
 Size: 6" 8" 10" 12" 14"  
 Installed with adapter or diffuser's round neck to control the air volume by adjust blades.

Can be adapted to any diffuser adapter, easy to install, low noise. Enhance air flow or exhaust.



### W307 Exhaust Fan

Size: 6" 8" 10"  
 ■ Voltage: 220V ■ Rotational speed: 800-1800rpm  
 ■ Frequency: 50HZ ■ Air volume: 128/180m<sup>3</sup>/Hr  
 ■ Current: 0.15A ■ Noise level: 42/59 dBA  
 ■ Power consumption: 36W



## Smoke Exhaust / Flexible Duct

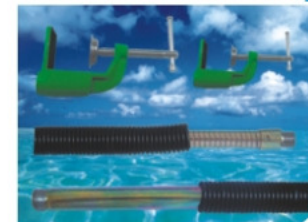
### Smoke Exhaust



Material: Transparent ABS  
 Thickness: 0.15mm  
 Ideal for tin solder.  
 Conduit not included.

Model	Size
P25	2.5"
P30	3"
P40	4"

### PVC Coated Flex Conduit



### Smoke Exhaust Series

Material: PVC coated galvanized steel.  
 Length: 400mm, 610mm  
 Base material: Cast iron



### PVC-Flexible Duct

Material: PVC  
 Thickness: 0.15mm  
 Standard length: 10m  
 Temperature resistant: 40°C

Model	Size
SC-25	2.5"
SC-30	3"
SC-40	4"
SC-50	5"
SC-60	6"

PVC cloth enhanced with built-in spiral steel wire.  
 Flame retardant.



### White PVC Flexible Duct

Material: PVC cloth laminated with multi layer aluminum foil enhanced with built-in spiral steel wire.  
 Feature: Excellent flexibility and strength, light weight, easy to install.  
 Standard length: 10m  
 Temperature resistant: 40°C

Model	Size
SE-25	2.5"
SE-30	3"
SE-40	4"
SE-50	5"
SE-60	6"



### Nylon Flexible Duct

Material: Nylon enhanced with built-in spiral steel wire.  
 ■ Temperature resistant: 90°C  
 ■ Size: 2" - 14"  
 ■ Standard length: 10m  
 ■ Color: Silver grey  
 ■ May order insulated models.  
 Flame retardant.

Model	Size
SD-02	2"
SD-03	3"
SD-04	4"
SD-06	6"
SD-08	8"
SD-10	10"
SD-12	12"
SD-14	14"