

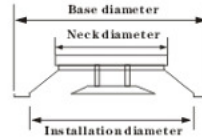
## Aluminum Alloy Air Diffuser



### Disk Type Air Diffuser

**Material:** Aluminum alloy  
**Structure:** Outer part is circular type; core part is disk shape.  
**Feature:** Core disk is adjustable. May adjust to fit different air volume situation such as summer time and winter time.

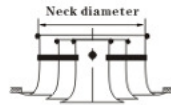
**Accessory:** May add volume control damper.  
**Size:** neck diameter:  $\phi$  150,  $\phi$  200,  $\phi$  250,  $\phi$  300,  $\phi$  350,  $\phi$  375



### Ring Type Air Diffuser

**Material:** Aluminum alloy  
**Structure:** Outer part is circular type, core part are combined with rings.  
**Feature:** Inner rings can adjust  $\pm 45^\circ$ , low air friction, high air blow distance. Ideal for theaters, gyms and high ceiling area.

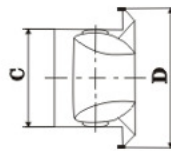
**Accessory:** May add volume control damper.  
**Size:** neck diameter:  $\phi$  150,  $\phi$  200,  $\phi$  250,  $\phi$  300,  $\phi$  350



### Ball Spout Type Air Diffuser

**Material:** Aluminum alloy  
**Specification:** C diameter  
 $\phi$  125,  $\phi$  150  
 $\phi$  200,  $\phi$  250

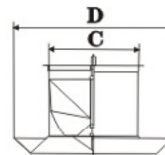
**Feature:** Outer shell and inner ball spout parts. Fix the outer shell, inner ball spout part can adjust  $\pm 30^\circ$  to adjust air blow direction.



### Eddy Air Diffuser

**Material:** Aluminum alloy  
**Specification:** C diameter  
 $\phi$  250,  $\phi$  320  
 $\phi$  400,  $\phi$  500

**Feature:** Combined with circular shell and eddy core. May get different air volume by adjust the core part's height. High air blow distance, low noise.



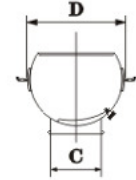
## Aluminum Alloy Air Diffuser / Volume Control Damper



### Ball Type Air Diffuser

**Material:** Aluminum alloy  
**Specification:** D diameter  
 $\phi$  125,  $\phi$  150  
 $\phi$  200,  $\phi$  250

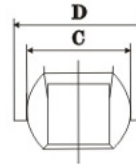
**Feature:** Combined with outer shell and inner part. Fix outer shell and inner ball part can adjust  $\pm 45^\circ$  to adjust air blow direction. Equipped air volume control board in neck portion to adjust air volume.



### Drum Type Air Diffuser

**Material:** Aluminum alloy  
**Specification:** D diameter  
 $\phi$  125,  $\phi$  150  
 $\phi$  200,  $\phi$  250

**Feature:** Combined with outer shell and inner part. Fix outer shell and inner part can adjust up/down  $30^\circ$  to adjust air blow direction. Louvers adjustable.



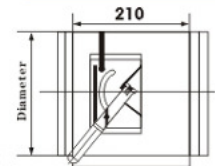
### Cylinder Type Volume Control Damper

**Material:** Galvanized steel sheet / Stainless steel  
**Feature:** Connected with ductwork to control the air volume.

**Damper type:** 1. No flange  
 2. Single flange  
 3. Double flanges

**Specification:** Diameter(Per customers' design)

### Smoke Exhaust / Fire Damper



### Circular Type Fire Damper

**Material:** Galvanized steel sheet / Stainless steel

**Feature:** 1. Keep open ordinarily. When the air temperature inside the duct reaches  $70^\circ\text{C}$  ( or  $280^\circ\text{C}$  ), the fusible plug melts and shut down the damper automatically.  
 2. The blades can be opened or closed manually. Have to reset manually after action.  
 3. Six opening angles for blades.  
 4. Blades close signal output available.

**Specification:** Diameter(Per customers' design)

